

Mechanical Lift Hinge Kit for Doors weighing up to 500 lbs

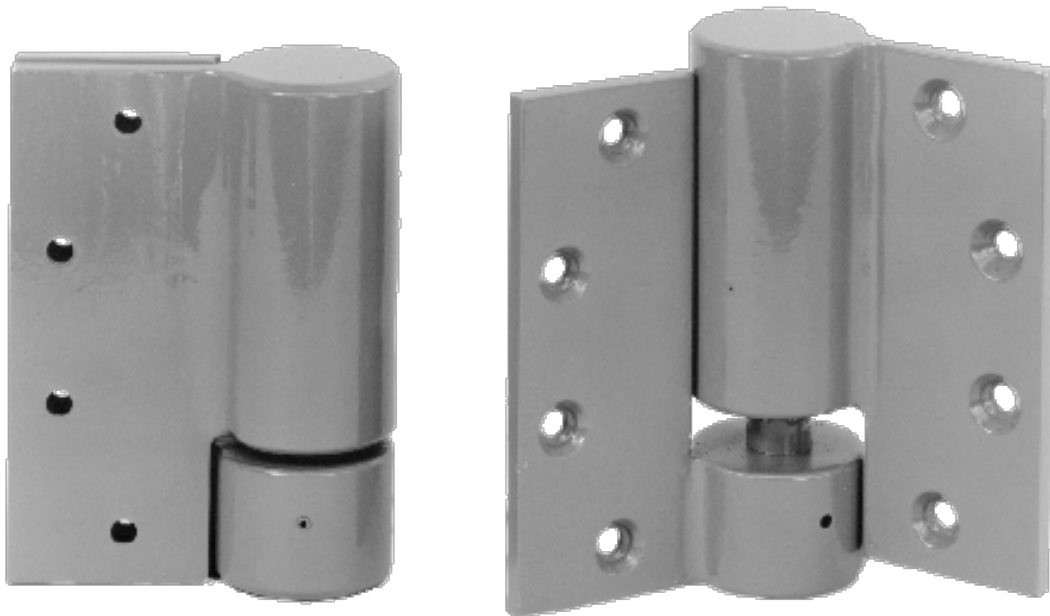
Description:

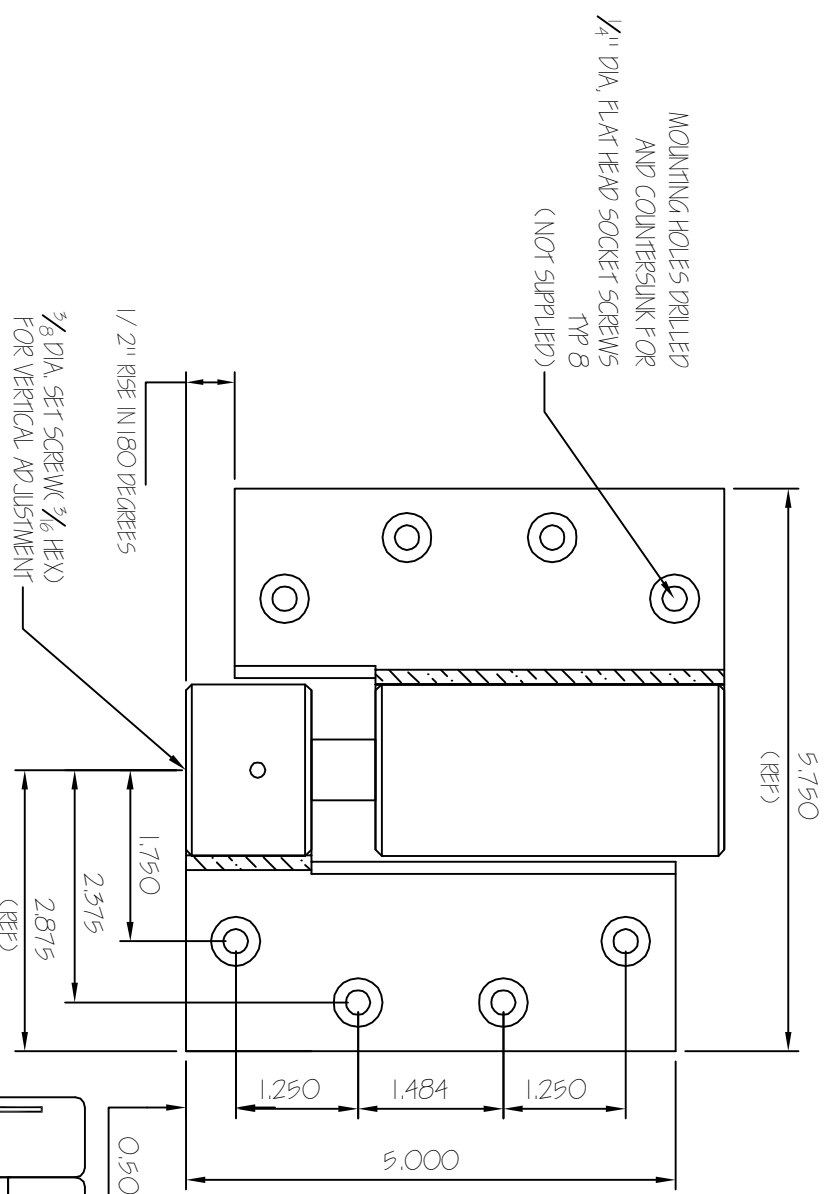
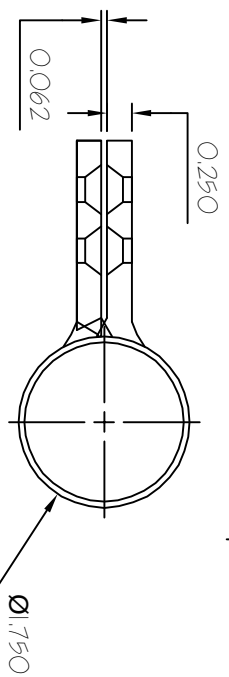
For use on personnel size acoustical doors that require enhanced sealing characteristics by compressing the seal against the frame and threshold. The Lifting action provides $\frac{1}{2}$ " rise in 180 degrees of door rotation via a unique high lead power screw and nut design that will take higher loads, wear less and operate easier than conventional cam-lift hinges. All wear surfaces are lubricated and sealed from the environment. Can also be used in self-closing applications where the minimum door weight is 150 lbs.

A full mortise (2) hinge kit comprised of: (1) LIFTU-(LH/RH)P hinge designed to support the full door weight and provides the lifting action; (1) LIFTL-(LH/RH)P radial support hinge. The (2) hinges shall be properly spaced to assure the radial load does not exceed the radial capacity. Refer to the Engineering Section on how to calculate radial load based on hinge spacing or contact the Engineering Department.

Specifications:

Hinge Size:	5.00" high x 5.75"(Ref.) wide
Vertical Capacity:	500 lbs
Radial Capacities:	200 lbs
Vertical adjustment:	(+/-) 1/8"
Approximate torque to move door:	0.23 lb-in/lb
Bolted connection:	1/4" diameter flat head socket screw (not supplied), Fu= 150,000 min ANSI 156.7 standard pattern
Base Material:	1018 Cold rolled steel, options: 304 SST, 316 SST
Finish:	USP(primed), options: zinc clear, US32D
Drawing:	L21013K1





LIFT-UP AND LIFT-FULL MORTISE HINGE DETAIL

Rev No	Revision Note	Date	Signature	Checked

Drawing Notes:
 1. ALL DIMENSIONS IN INCHES
 2. VERTICAL CAPACITY= 500 LBS
 3. RADIAL CAPACITY= 200 LBS

Tolerances
Decimal +/- 0.005
Fractional +/- .xxx
Angular +/- .xxx

MECHANICAL LIFT HINGE KIT
 Drawn by cmk
 Checked by

RH SHOWN LH OPPOSITE (FULL MORTISE)
 Edition 2
 Approved by - date
 Filename
 Date 8/29/11
 Scale 1:1

brookfield industries inc,
 99 West Hillside Ave. : Thomaston, CT 06787
 P: (860) 283-6211 F: (860) 283-6123

Material 1018 CRS
 L21013K1

