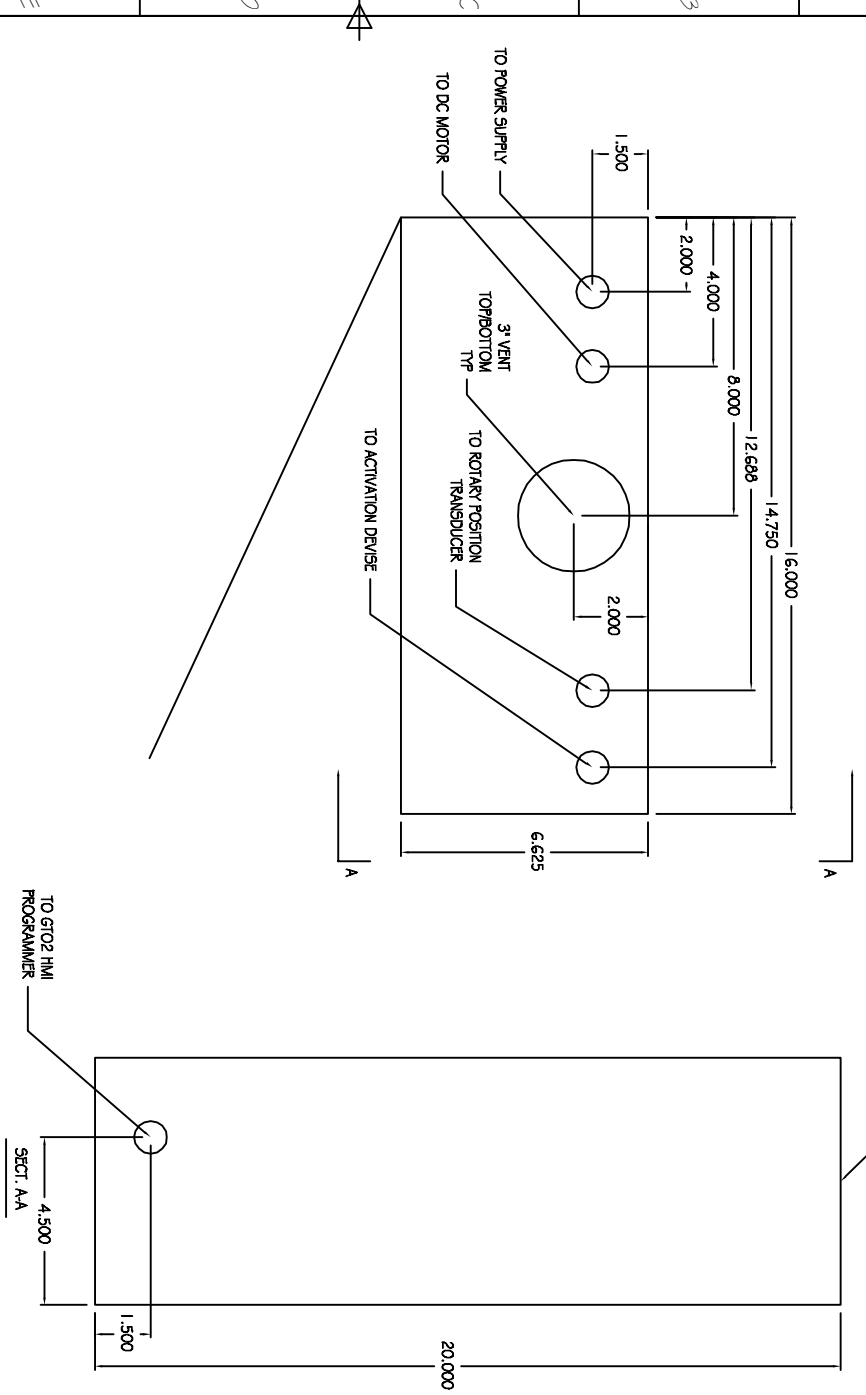


Rev No	Revision note	Date	Signature	Checked

LISTED NEMA 1 ENCLOSURE:
14 X 20 X 6 5/8



SECT. AA

Drawing Notes:
1) ALL PENETRATIONS ARE 3/8" DIA.
FOR 1/2" CONDUIT U.N.O.

Tolerances
Decimal +/- 1/32"
Fractional +/- .xxx
Angular +/- .xxx

NEMA 1 OPTION FOR ALL SWING DOORS

HOLE LOCATIONS NEMA 1 ENCLOSURE

Approved by - date	Material	Date	Scale
		7/3/14	1:1

Drawn by: KPK
Checked by: [Signature]

Edition 1

brookfield industries inc.
99 West Hillside Ave. : Thomaston, CT 06787
P: (860) 285-6211 F: (860) 285-6129

email: brookinge@snet.net
www.thomasregister.com/brookfield

Drawing Number/Rev Name
DO-Swingier-NEMA-1



2 3 4 5 6 7 8